



Garret Armchair, Boucle, Natural

£1,695

Regular

£1,441

Membership

Available in

- | | |
|--|---|
|  Velvet Taupe |  Velvet Grey Blue |
|  Velvet Mustard |  Velvet Lichen |
|  Boucle Natural |  Velvet Olive |
|  Velvet Rust |  Velvet Camel |
|  Velvet Royal Blue |  Velvet Porcelain |
|  Velvet Antique Rose |  Velvet Chocolate |

Product details

Shaped for optimal comfort and visual impact, the Garret swivel chair is a House favourite seen in many of our club spaces including 180 House where this piece is inspired, and Little Beach House Brighton. Inviting you to relax and sink into its undulating curves, this armchair also features a swivel base for multiple points of view in the home. Add to any corner of the room for a stand-alone statement with soft lighting overhead.

- Round armchair
- Curved panels
- Hardwood frame
- Boucle upholstery
- Also available in other fabrics and colourways
- Inspired by 180 House

Dimensions

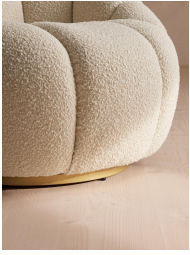
Product dimensions: H76 x W97 x D91cm / H30 x W39 x D36"

Product weight: 35.9kg / 79.1lbs

Packaged or boxed dimensions: H79 x W101 x D95cm / H31.1 x W39.8 x D37.4"

Packaged or boxed weight: 44.3kg / 97.7lbs





Details

Assembly required: No

Care instructions: Professional upholstery cleaning only

Composition: 54% Polyester, 46% Acrylic

Construction: Corner blocked, stapled and glued

Fabric: Boucle

Feet: Stainless steel swivel base

Filling: Foam with fibre

Frame: Birch and Engineered hardwood

Material: Boucle

Removable cushions: No

Removable legs: No

Seat depth: 58cm

Seat height: 44cm

Seat width: 50cm