



## Ina Chandelier

£3,950

Regular

£3,358

Membership

### Product details

As seen at DUMBO House, our Ina chandelier is handmade from Venetian glass, which is mouth-blown by skilled artisans in Venice using age-old tools and techniques. The three-tiered chandelier features petal-like white glass segments suspended from an aged, brass-finish iron frame. Hang it in a living area to bring the elegance of Soho House West Hollywood into your home.

- Handmade from mouth-blown Venetian glass
- Made by skilled artisans in Venice
- Petal-like white glass segments
- Three-tier formation
- Aged brass iron frame
- Also available as a wall light
- Inspired by Soho House West Hollywood

### Dimensions

Product dimensions: H61 x W69 x D69cm / H24 x W27.2 x D27.2"

Product weight: 40kg / 88.2lbs

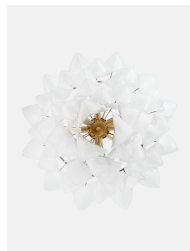
Packaged or boxed dimensions: H62 x W62 x D62cm / H24.4 x W24.4 x D24.4"

Packaged or boxed weight: 10kg / 22lbs

Number of boxes: 2

\* Box 1 : H62 x W62 x D62cm / H24.4 x W24.4 x D24.4"

\* Box 2 : H55 x W75 x D50cm / H21.7 x W29.5 x D19.7"



## Details

Assembly required: Yes, specialist

Bulb required: 7 / E14 / 9W Maximum

Bulb(s) included: No

Care instructions: Clean with a soft dry cloth only. Do not use polishing agents, harsh chemicals or abrasive cleaners as they may damage the finish.

Always switch off the electricity supply before cleaning.

Ceiling rose diameter: 11cm

Dimmable: Yes, please consult a qualified

Electrician required: Yes

Height adjustable: Yes

Maximum height: 110cm

Minimum height: 60cm

Voltage: 220-240V