



Dafne Armchair, Velvet, Rust

£1,895

Regular

£1,611

Membership

Available in



Velvet Rust



Velvet Camel

Product details

Inspired by the 1960s-style interiors of White City House, the Dafne armchair has a low seat to sink into and wide, comforting curves. Fully upholstered in rich velvet, use as a stand-alone piece to recreate our reading nooks with soft lighting above, or as a pair for a cosy seating arrangement in the living area.

- Statement armchair
- Wide curved frame
- Fully upholstered in velvet
- Available in other colours
- Inspired by White City House

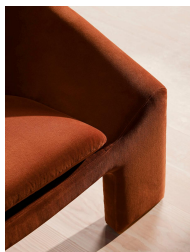
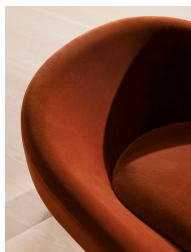
Dimensions

Product dimensions: H69 x W99.8 x D82cm / H27.2 x W39.3 x D32.3"

Product weight: 26kg / 57.3lbs

Packaged or boxed dimensions: H69 x W100 x D80.5cm / H27.2 x W39.4 x D31.7"

Packaged or boxed weight: 36.5kg / 80.5lbs



Details

Assembly required: No

Care instructions: Professional upholstery cleaner only

Composition: Frame: Birch ; Foot: Birch ; Filling: Foam, Fiber. Fabric: 85% Cotton, 15% Polyester

Fabric: Velvet

Filling: Polyester and Foam

Frame: Birch

Removable cushions: No

Removable legs: No

Seat depth: 54cm

Seat height: 41cm

Seat width: 75cm