



## Garret Armchair, Boucle, Natural, Us

£1,695

Regular

£1,441

Membership

### Available in

- |   |   |
|---|---|
|  Velvet Mustard    |  Velvet Lichen       |
|  Boucle Natural    |  Velvet Olive        |
|  Velvet Rust       |  Velvet Camel        |
|  Velvet Royal Blue |  Velvet Porcelain    |
|  Velvet Taupe      |  Velvet Antique Rose |
|  Velvet Grey Blue  |  Velvet Chocolate    |

### Product details

Shaped for optimal comfort and visual impact, the Garret swivel chair is a House favourite featured in a variety of our club spaces. Inviting you to relax and sink into its undulating curves, it's upholstered in soft bouclé and mirrors the designs seen at DUMBO House in Brooklyn. Use to recreate our cosy reading nook in your own home.

- Swivel armchair
- Soho House favourite
- Curved silhouette
- Hardwood frame
- Upholstered in soft bouclé
- Also available in other fabrics and colourways
- Inspired by 180 House

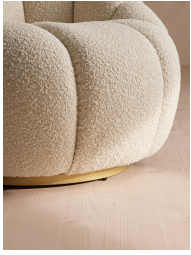
### Dimensions

H76 x W97 x D91cm / H30 x W39 x D36"

### Weight

35.9kg / 79.1lbs





## Details

Assembly required: No

Care instructions: Professional upholstery cleaning only

Composition: 54% Polyester, 46% Acrylic

Construction: Corner blocked, stapled and glued

Fabric: Boucle

Feet: Stainless steel swivel base

Filling: Foam with fibre

Frame: Birch and Engineered hardwood

Material: Boucle

Removable cushions: No

Removable legs: No

Seat depth: 58cm

Seat height: 44cm

Seat width: 50cm