

SOHO HOME



## Pine Remo Candle, Large

£73 Regular

£58 SOHO HOME+

### Product details

Inspired by Christmas time at Soho Farmhouse, our Pine fragrance combines top notes of aromatic Rosemary with a heart of Clove and a base of Cedarwood. The candle is housed in a mouth-blown coloured glass vessel with an irregular hand-cut pattern for a truly unique finish. Each candle is hand poured in England using a blend of mineral and vegetable wax that provides a clean burn and long-lasting scent release.

#### Scent notes

Top: Rosemary

Middle: Clove

Base: Cedarwood

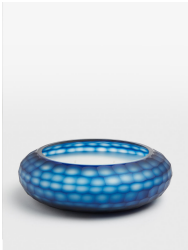
Large candle Pine fragrance Hand poured in England Mouth-blown coloured glass holder with hand-cut pattern Vegan-friendly blend of mineral and vegetable wax Approximate burn time: 35-45 hours Bespoke fragrance created by an expert perfumer for Soho House Inspired by Soho Farmhouse

### Dimensions

H23 x W21 x D7cm / H9.1 x W8.3 x D2.8"

### Weight

0.8kg / 1.8lbs



## Details

Fragrance: Pine

Fill weight: 800g

Material: Glass

Burn Time: 35-45 hours

Care instructions: When lighting your candle for the first time, allow to burn for a minimum of 2 hours or until there is a completely molten wax pool. This will ensure good burn performance and minimise instances of 'tunnelling'.

For best results, burn your candle for at least 2 hours but no more than 4 hours at a time. Burn in an area free from draughts & keep wax pool free from debris such as match heads. Allow the wax pool to solidify completely before relighting the candle. Keep wicks trimmed to 5mm at all times to avoid smoking. Stop use when 10mm of wax remains.

Never leave a burning candle unattended. Keep out of reach of children and pets. Keep away from flammable materials, overhanging objects and polished surfaces. Never put in a warm place as this can cause the candle to overheat. Keep a minimum distance of 10cm between burning candles