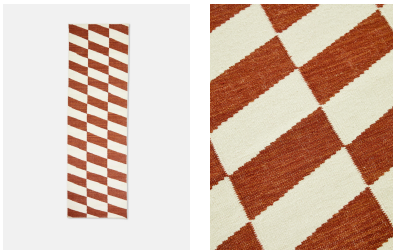


SOHO HOME



## Nadine Runner Rust, 75 X 250cm

£350

Regular

£298

Membership

### Product details

The soft furnishings of Soho Warehouse form the inspiration for the Nadine runner. Cast in a woven flatweave style, the runner balances depth and airiness with a geometric design in sage and oatmeal tones. Lay it underfoot to fill out expansive floor space.

- Flatweave geometric-style runner
- Tones of oatmeal with sage
- Woven in India
- Inspired by Soho Warehouse

### Dimensions

Product dimensions: H75 x W250 x D3cm / H2'5" x W8'2" x D1"

Product weight: 6kg / 13.2lbs

Packaged or boxed dimensions: H250 x W20 x D20cm / H98.4 x W7.9 x D7.9"

Packaged or boxed weight: 8kg / 17.6lbs

### Details

Rug style: Geometric

Technique: Flatweave