



Ina Chandelier

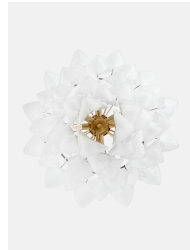
£3,950 Regular

£3,358 Membership

Product details

As seen at DUMBO House, our Ina chandelier is handmade from Venetian glass, which is mouth-blown by skilled artisans in Venice using age-old tools and techniques. The three-tiered chandelier features petal-like white glass segments suspended from an aged, brass-finish iron frame. Hang it in a living area to bring the elegance of Soho House West Hollywood into your home.

Handmade from mouth-blown Venetian glass Made by skilled artisans in Venice Petal-like white glass segments Three-tier formation Aged brass iron frame Requires seven x E14/ 40W max bulbs Also available as a wall light Inspired by Soho House West Hollywood



Dimensions

H61 x W69 x D69cm / H24 x W27.2 x D27.2"

Weight

40kg / 88.2lbs

Details

Material: Metal and Italian Glass

Cable & Ceiling Rose

Cable Length: 50cm

Height Adjustable: Yes

Minimum Height: 60cm

Maximum Height: 110cm

Ceiling Rose Diameter: 11cm

Bulb Specification

Bulb(s) Included: No

Bulb Required: 7 / E14 / 40W Maximum

Assembly & Technical

Assembly Required: Yes

Electrician Required: Yes

Voltage: 220-240V

Compliance: EU / CE

IP Rating: IP20

Environment: Dry

Electrical Class: Class 11

Dimmable: Yes. Please consult a qualified electrician regarding compatible bulbs for your dimmer switch system.

Care Instructions: Clean with a soft dry cloth only. Do not use polishing agents, harsh chemicals or abrasive cleaners as they may damage the finish. Always switch off the electricity supply before cleaning.