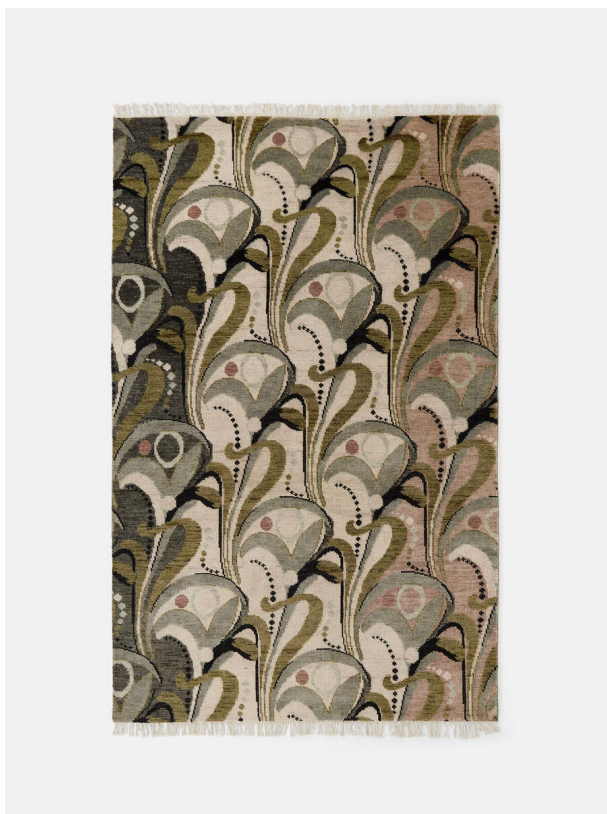


SOHO HOME



## Obie Rug Multi, 170 X 240cm

£1,895

Regular

£1,611

Membership

### Sizes

20 x 30cm (Swatch), 170 x 240cm, 200 x 300cm, 270 x 360cm, 365 x 460cm

### Product details

Originally hand-painted by our in-house design team using watercolours, our Obie rug has been hand-knotted with wool and features abstract floral motifs inspired by Art Nouveau. Place it in a bedroom or living area to reference the calming tones of Soho House Rome.

- Wool pile rug
- Hand-knotted in India
- Originally hand-painted in-house
- Inspired by Art Nouveau design
- Inspired by Soho House Rome

### Dimensions

H240 x W170 x D1cm / H7'10" x W5'6" x D1"

### Weight

12kg / 26.5lbs

### Details

Assembled size: 170 x 240cm

Assembly required: No

Care instructions: Vacuum regularly on a low-power setting, using a vacuum cleaner without a beater

Composition: Wool 74.5%, Cotton 25.5%

Construction: Hand knotted

Fabric: Wool

Handmade: Yes

Pile: Wool

Rug style: Classic