



## Ina Wall Light

£595 Regular

£506 Membership

### Product details

As seen at DUMBO House, our Ina wall light is made from Murano glass which is mouth-blown and hand finished by skilled artisans in Venice using centuries-old tools and techniques. It features delicately shaped glass sections which are suspended from aged, brass finish arms to provide a soft, flattering light.

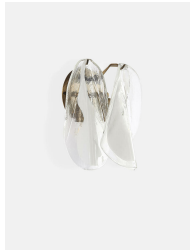
Wall light handcrafted from mouth-blown Murano glass Three petal-like opaque glass sections 2 / E14 Aged brass finish frame Made by hand by skilled artisans in Venice Also available as a chandelier As seen at DUMBO House

### Dimensions

H25 x W25 x D15cm / H9.8 x W9.8 x D5.9"

### Weight

3kg / 6.6lbs



## Details

Material: Italian handmade glass and metal

Ceiling Rose Diameter: 4.7"

Back Bracket Diameter: 12cm

Bulb Specification

Bulb(s) Included: No

Bulb Required: 2 / E14 / LED

Assembly & Technical

Assembly Required: Yes

Electrician Required: Yes

Voltage: 220-240V

Compliance: CE

IP Rating: IP20

Environment: Dry

Electrical Class: Class 11

Dimmable: Yes. Please consult a qualified electrician regarding compatible bulbs for your dimmer switch system.

Care Instructions: Clean with a soft dry cloth only. Do not use polishing agents, harsh chemicals or abrasive cleaners as they may damage the finish. Always switch off the electricity supply before cleaning.