



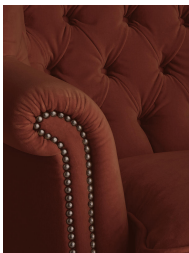
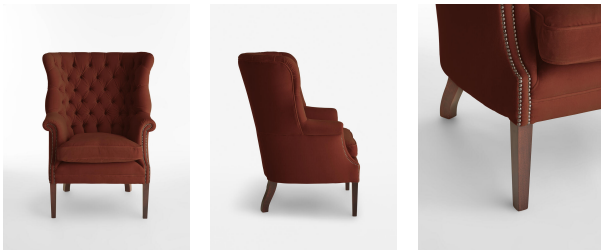
House Porter Chair, Velvet Rust

£2,995 Regular

£2,546 SOHO HOME+

Available in

- | | |
|---|--|
|  Linen Natural |  Linen Antelope |
|  Linen Loden |  Linen Dahlia |
|  Linen Light Grey |  Linen Dark Navy |
|  Velvet Slate |  Velvet Navy |
|  Velvet Teal |  Velvet Forest |
|  Velvet Lichen |  Velvet Burgundy |
|  Velvet Rose Water |  Velvet Cream |
|  Velvet Ochre |  Velvet Rust |



Product details

The wide side wings of our Porter chair envelop the sitter, making it ideal for when you want to be on your own or feel extra cosy. Hand crafted in England and upholstered in tactile pure linen, it's inspired by traditional porter chairs seen around the Houses from Babington to Chicago and New York.

- Upright porter chair with velvet upholstery
- Wide side wings
- Deep buttoned detailing
- Hand crafted in England
- Dark stained timber feet
- Inspired by chairs at Soho House Chicago and Babington House

Dimensions

Height :94 cm
Width :87 cm
Depth :94 cm
Weight :26 kg

Details

Product Dimensions: H117 x W87 x D94cm

Arm Height: 72cm

Seat Depth: 58cm

Seat Width: 52cm

Seat Height: 56cm

Assembly Required: No

Removable Legs: No

Removable Cushions: Yes

Frame: Engineered wood

Legs: Polished hardwood

Fabric: 85% cotton, 15% polyester

Filling: Feather filled

Care Instructions: Professional upholstery
cleaning only