

Ilario Dining Table, Dark Emperador Marble

£6,495

Regular

£5,196

Membership

Product details

Designed to seat up to eight people, the Ilario dining table is constructed from solid, honed Dark Emperador marble - a Spanish dark brown stone with defined white veining. Four tapered legs, an oval top and chamfered edge create a sense of playfulness and a modern feel. Place it in an open dining area to echo the settings in Soho House Rome.

- Oval-shaped dining table
- Solid honed marble
- Dark Emperador marble sourced from Spain
- Dark brown tone with white veining
- Each table is unique due to variations in the marble
- Chamfered edge
- Tapered legs
- Seats six to eight people
- Inspired by Soho House Rome
- Weight: 215kg / 474lbs

Dimensions

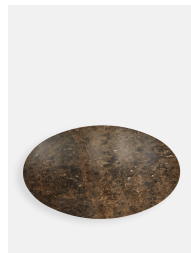
Product dimensions: H73 x W200 x D120cm / H28.7 x W78.7 x D47.2"

Product weight: 215kg / 474lbs

Number of boxes: 2

* Box 1 : H132 x W212 x D14cm / H52 x W83.5 x D5.5"

* Box 2 : H92 x W53 x D53cm / H36.2 x W20.9 x D20.9"



Details

Material: Aluminium and Marble

Feet: No

Assembly Required: Yes

Care Instructions: Clean with water using a cloth or sponge. Marble is a material to be clean with extreme delicacy: it is porous and can absorb liquids resulting in stains. Poliform surfaces are treated with a special anti-stain and anti-oil product; nonetheless, spills of wine, coffee, lemon, vinegar and other products containing aggressive agents must be wiped up immediately. To maintain surfaces in good condition, a regular treatment with typical products for cleaning and maintenance of marble, ensuring that these products are neutral and specific for the finish of your marble glossy or polished. Do not under any circumstances use abrasive or aggressive products, acidic detergents, bleach, abrasive paper or steel wool.