

## Swanson Rug, 170 X 240cm

£995 Regular

£846 Membership

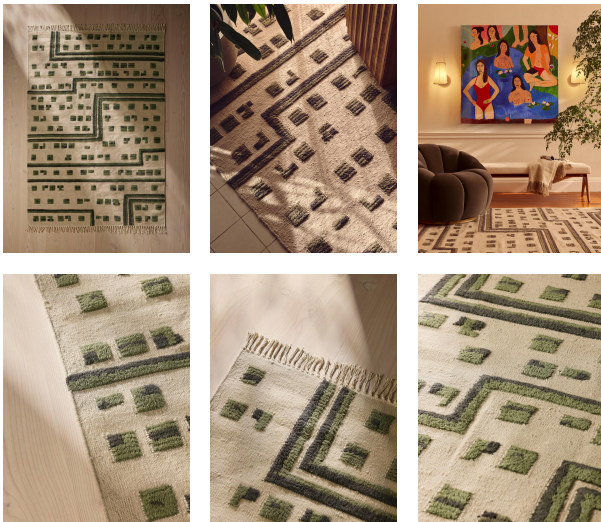
### Sizes

170 x 240cm, 20 x 30cm (Swatch)

### Product details

The contemporary geometric design of our Swanson rug takes inspiration from the prints and upholstery seen at Brighton Beach House. Designed in-house, it has been flat woven in India from pure wool with raised details. Hardwearing and long-lasting, we use flat-woven rugs in most of our Houses, but particularly at Soho Farmhouse where we lay them over chunky sisal for added texture.

- Contemporary geometric rug
- Wool-cotton pile
- Flat woven in India
- Raised textures in details
- Designed in-house
- Contemporary design
- Available in three sizes
- Inspired by the prints and upholstery in Brighton Beach House



### Dimensions

Product dimensions: H170 x W240 x D1cm / H5'6" x W7'10" x D0.4"

Product weight: 6.3kg / 13.9lbs

Packaged or boxed dimensions: H173 x W15 x D15cm / H68.1 x W5.9 x D5.9"

Packaged or boxed weight: 7.8kg / 17.2lbs

## Details

Care instructions: Spot Clean Only

Composition: 78% Wool, 22% Cotton

Handmade: Handmade

Pile: 2

Rug style: Geometric

Technique: Flatweave