

Swanson Rug, 200 X 300cm

£1,395

Regular

£1,186

Membership

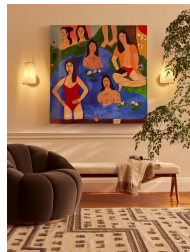
Sizes

20 x 30cm (Swatch), 170 x 240cm, 200 x 300cm, 270 x 360cm

Product details

The contemporary geometric design of our Swanson rug takes inspiration from the prints and upholstery seen at Brighton Beach House. Designed in-house, it has been flat woven in India from pure wool with raised details. Hardwearing and long-lasting, we use flat-woven rugs in most of our Houses, but particularly at Soho Farmhouse where we lay them over chunky sisal for added texture.

- Contemporary geometric rug
- Wool-cotton pile
- Flat woven in India
- Raised textures in details
- Designed in-house
- Contemporary design
- Available in three sizes
- Inspired by the prints and upholstery in Brighton Beach House



Dimensions

Product dimensions: H200 x W300 x D1cm / H6'6" x W9'10" x D0.4"

Product weight: 8.18kg / 18lbs

Packaged or boxed dimensions: H203 x W17 x D17cm / H79.9 x W6.7 x D6.7"

Packaged or boxed weight: 9.68kg / 21.3lbs

Details

Care instructions: Spot Clean Only

Composition: 78% Wool, 22% Cotton

Handmade: Handmade

Pile: 2

Rug style: Geometric

Technique: Flatweave