



## Emet Three Seater Sofa, Velvet Cinammon

£4,395 Regular

£3,736 Membership

### Available in

- Velvet Cinammon
- Velvet Fern
- Velvet Indigo
- Velvet Deep Green
- Velvet Honey

### Product details

The rounded curves of our Emet sofa take inspiration from the Bauhaus-inspired decor of Soho House Nashville. Upholstered in a warm cinnamon velvet, this three-seater design is detailed with chunky piping to the edges and a textural gathered back for an unexpected element of interest. A deep sectioned seat provides extra comfort for days when lounging is the only thing on your agenda.

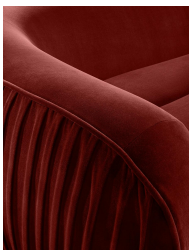
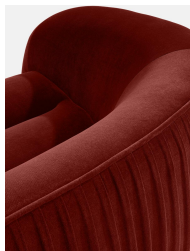
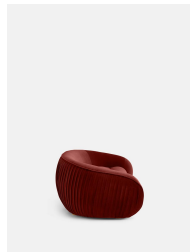
Three-seater sofa Upholstered in cinnamon velvet  
Chunky piping detail Gathered back Deep sectioned seat  
Inspired by Soho House Nashville

### Dimensions

H76.2 x W219.71 x D116.84cm / H30 x W87 x D46"

### Weight

93kg / 205lbs



## Details

Seat depth: 69cm

Seat width: 153cm

Seat height: 44.5cm

Assembly required: No

Removable legs: No

Removable cushions: No

Frame: Birch and Engineered Hardwood

Feet: Oak

Fabric: Velvet

Composition: Velvet 74% Cotton, 26% Polyester  
(100% Cotton Pile)

Filling: Foam with Fiber

Care Instructions: Professional Upholstery

Cleaning Only