



## Treviso Pink Mirror

£1,995

Regular

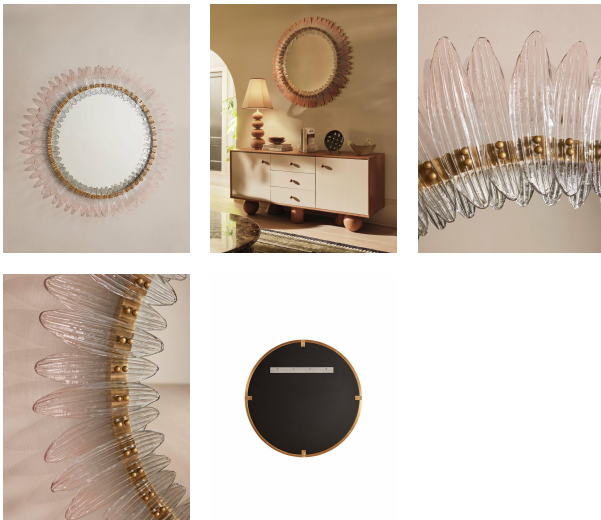
£1,696

Membership

### Product details

An extension of our Treviso chandelier, the Treviso mirror is just as standout in a floral design. Referencing the lighting styles seen in Soho House Bangkok, this mirror is handmade from pink ombre glass with petal-like segments that open outwards from an antique brass frame. Place in the bathroom or hallway to give the illusion of more space with a statement twist.

- Statement glass mirror
- Bathroom-safe
- Floral design
- Handmade from pink ombre glass
- Petal-like segments
- Antique brass frame
- Inspired by Soho House Bangkok



### Dimensions

Product dimensions: H111 x W111 x D8cm / H43.7 x W43.7 x D3.2"

Product weight: 30kg / 66.1lbs

Packaged or boxed dimensions: H102.5 x W102.5 x D29cm / H40.4 x W40.4 x D11.4"

Packaged or boxed weight: 39kg / 86lbs

### Details

Care instructions: Clean with a soft dry cloth only. Do not use polishing agents, harsh chemicals or abrasive cleaners as they may damage the finish.

Always switch off the electricity supply before cleaning.

Composition: Glass

Wall leaning only: No