

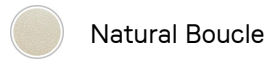


Vivienne Modular Sofa, Three Seater, Boucle, Us

£3,295 Regular

£2,801 SOHO HOME+

Available in



Product details

The eighth floor at White City House forms the inspiration for the Vivienne modular sofa, cut from textured boucle fabric and constructed into a three-seater with pleated stitch detailing, cylindrical legs, and a wrap-around back. It offers low lounge sitting which is ideal for cosy evenings in; coordinate and configure with other pieces in the Vivienne collection for the full effect.

- Three-seater
- Cylindrical legs
- Pleated stitch detailing
- Wrap-around arms and back
- Inspired by White City House

Dimensions

Height :82.6 cm
Width :236.2 cm
Depth :105.4 cm
Weight :52.3 kg

Details

Product dimensions: H33 x W93 x D41"
Arm height: 28"
Seat depth: 22"
Seat width: 72"
Seat height: 19"
Assembly required: No
Removable legs: No
Removable cushions: Yes
Frame: Engineered Hardwood
Legs: Birch
Fabric: 54% Polyester 46% Acrylic
Filling: Foam, Feather/ Down, Fibre
Care instructions: Professional upholstery cleaning

