



## Florentine Chandelier

£207

Regular

£166

Membership

### Product details

Referencing the styles at 76 Dean Street, the Florentine chandelier is crafted from traditional cast glass in a pendant style, with a classic glass shade and fluted rim. It has a cut-glass stem, finials and antique brass finish detail for a decorative effect.

- Antique brass finish frame
- Cast glass
- Pendant style
- Classic glass shade
- Fluted detail
- Adjustable chain
- Incandescent bulb recommended
- Requires 2 / E14 / 28W MAXIMUM
- Inspired by 76 Dean Street

### Dimensions

H155 x W39 x D39cm / H61 x W15 x D15"

### Weight

5.7kg / 12.6lbs



## Details

Materials: Glass and Iron

Cable & Ceiling Rose

Cable Length: 100cm

Height Adjustable: Yes

Minimum Height: 65cm

Maximum Height: 159cm

Ceiling Rose Diameter: 13.5cm

Bulb Specification

Bulb(s) Included: No

Bulb Required: 2 / E14 / 28W Maximum

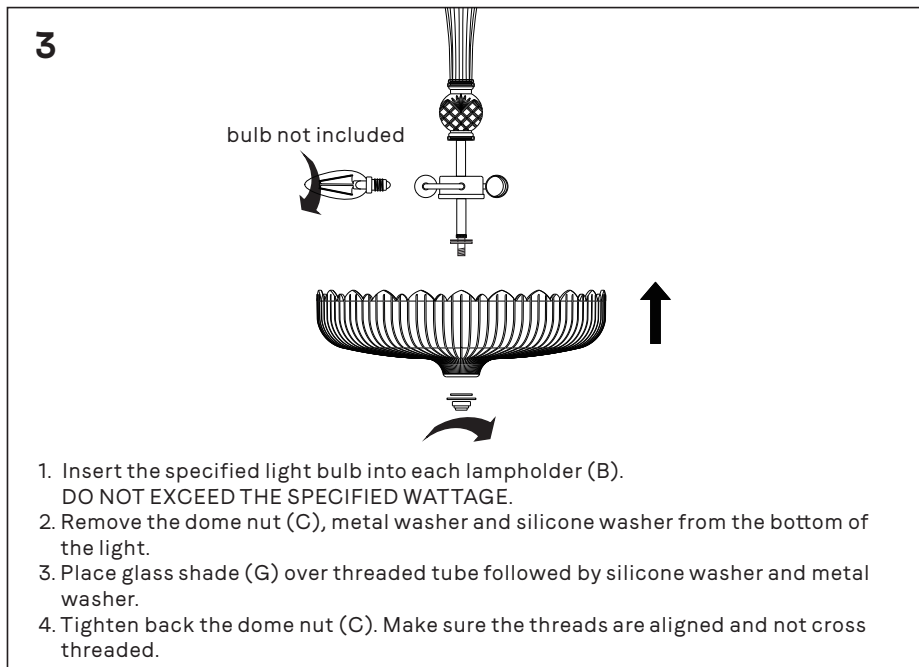
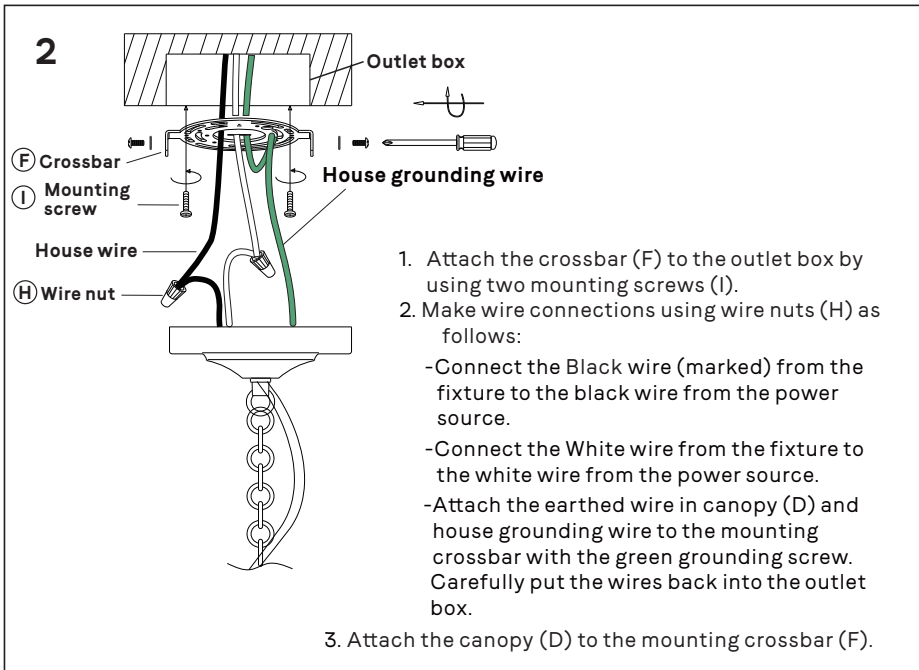
Assembly & Technical

Assembly Required: Yes

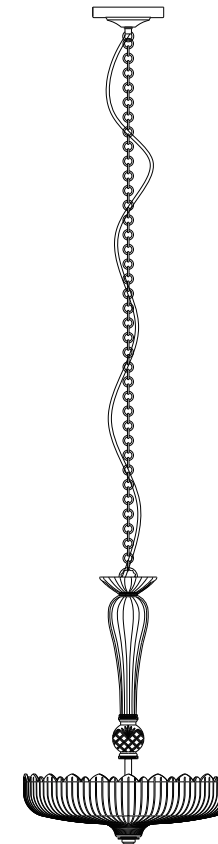
Electrician Required: Yes

Dimmable: Yes. Please consult a qualified electrician regarding compatible bulbs for your dimmer switch system. When assembling chandelier, please wear gloves.

Care Instructions: Clean with a soft dry cloth only. Do not use polishing agents, harsh chemicals or abrasive cleaners as they may damage the finish. Always switch off the electricity supply before cleaning.



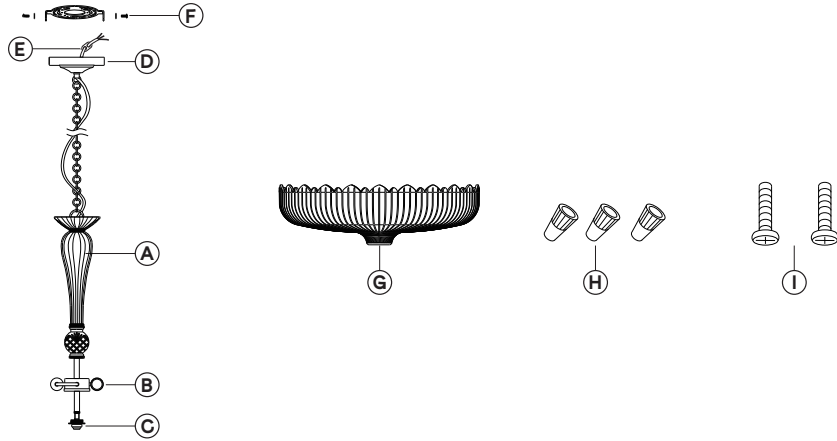

SOHO HOUSE



FLORENTINE CHANDELIER

74542621

## PARTS LIST



- A** Ceiling light (x1)
- B** Lampholder (x1)
- C** Dome nut (x1)
- D** Canopy (x1)
- E** Cable clip (x1)
- F** Mounting crossbar (x1)(attached on canopy)
- G** Glass shade (x1)
- H** Wire nut (x3)
- I** Mounting screw (x2)

## PRODUCT DIMENSION

1550H x 390Dia mm(61H x 15.4Dia inch)

## IMPORTANT SAFETY INSTRUCTIONS

- These instructions are provided for your safety.
- Please read instructions carefully and completely before beginning the assembly and installation of this lighting fixture.
- This fixture has been rated for up to two (2) E12 40Watt Maximum Type B light bulb (not included). To avoid the risk of fire, do not exceed the recommended lamp wattage. Dispose of old bulbs with care.
- For your safety: if the external flexible cable becomes damaged, it must be exclusively replaced by a qualified person in order to avoid any danger or the lighting fixture must be discarded.
- Unless otherwise marked / illustrated this lamp is meant for use in a dry, domestic, indoor environment only.
- The finish is only guaranteed against normal non-aggressive atmospheric conditions.
- Do not fit in locations near a heat source, the sea, or in polluted atmospheres.
- Please retain these instructions for future reference. If the product is sold please ensure the instructions are left with the appliance for the benefit and safety of the new owner.

If you need help or have damaged or missing parts, our team is here to assist.

Please email [hello@sohohome.com](mailto:hello@sohohome.com) or call +1 888 4333 218 (Toll-free)



## WARNING

- Electricity can be dangerous.
- Disconnect the power supply at the fuse box before installation.
- Installation must be carried out by a competent person.
- If in any doubt consult a qualified electrician.
- Installation must comply with current local and national wiring regulations.

## CHILD SAFETY

- Do not allow children to tamper with the product.
- Keep packaging out of reach of children.

## INSTALLATION

- Take care when handling and installing to avoid damage to the product.
- Remove all parts and hardware from box along with any plastic protective packaging.
- Do not discard any contents until after assembly is complete to avoid accidentally discarding small parts or hardware.
- Avoid mounting the fitting on a damp surface such as newly painted or plastered area. This may cause discoloration of the finish.
- When installing and whenever acting on the appliance ensure that the power supply has been switched off.

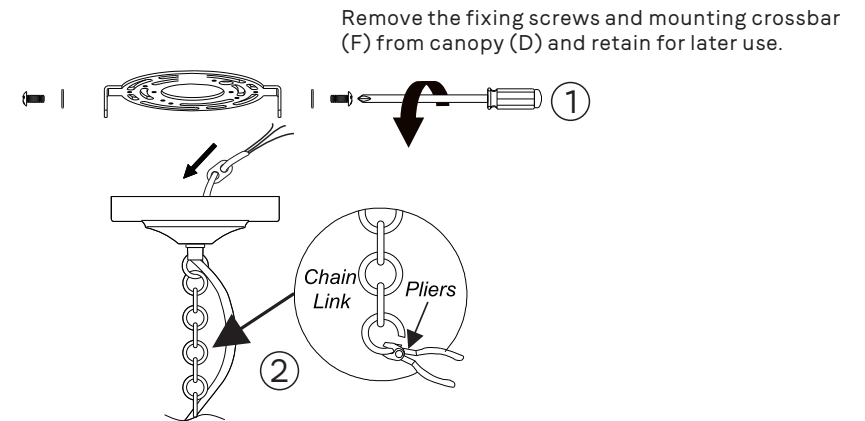
## CARE INSTRUCTIONS

- Wipe clean with a soft, dry cloth or static duster only.
- Always avoid the use of polishing agents, water, harsh chemicals or abrasive materials when cleaning as they may cause damage to the fixture.
- Always switch off the electricity supply before cleaning.

## TOOLS REQUIRED (Not Supplied)

- Cross Head Screwdriver
- Insulation Tape
- Pliers

1



1. To adjust the chain length remove the chain links by bending the links with a pair of pliers. When you have the preferred length of chain, link the chain to the canopy.
2. Push surplus cable into canopy (D), do not strain the cable. Move the cable clip (E) to the cable outlet in canopy (D).