



Trento Sicilian Thyme Candle, Green Marble, Large 350g

£140

Regular

£119

Membership

Product details

Handcrafted from apple-green marble, our large Trento candle has natural variations in the stone, making each piece unique. The lidded vessel is filled with our Sicilian Thyme fragrance, which blends top notes of Lemon and Thyme, with a heart of Pine and Lavender, and a hint of red fruit. Undertones of Patchouli and Amber round the scent off to capture the essence of Italian breakfasts on the morning terrace at Soho House Rome. Once finished, remove the borosilicate liner and reuse it as a decorative object.

Each candle is hand poured in England using a blend of mineral and vegetable wax that provides a clean burn and long-lasting scent release.

Scent notes

Top: Thyme

Middle: Pine

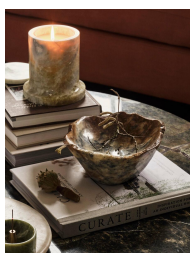
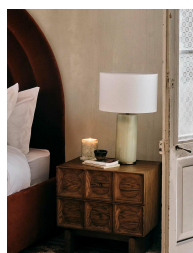
Base: Amber

- Large candle
- Sicilian Thyme fragrance
- Hand poured in England
- Apple-green marble vessel with unique natural variations
- Reusable vessel with lid
- Vegan-friendly blend of mineral and vegetable wax
- Bespoke fragrance created by an expert perfumer for Soho House
- Inspired by Soho House Rome

Dimensions

Product dimensions: H14.2 x W12.5 x D12.5cm / H5.6 x W4.9 x D4.9"

Product weight: 1.74kg / 3.8lbs



Details

Fragrance: Sicilian Thyme

Fill weight: 350g

Material: Marble

Burn Time: 45-50 hours

Care Instructions: When lighting your candle for the first time, allow to burn for a minimum of 2 hours or until there is a completely molten wax pool. This will ensure good burn performance and minimise instances of 'tunnelling'.

For best results, burn your candle for at least 2 hours but no more than 4 hours at a time. Burn in an area free from draughts & keep wax pool free from debris such as match heads. Allow the wax pool to solidify completely before relighting the candle. Keep wicks trimmed to 5mm at all times to avoid smoking. Stop use when 10mm of wax remains. Never leave a burning candle unattended. Keep out of reach of children and pets. Keep away from flammable materials, overhanging objects and polished surfaces. Never put in a warm place as this can cause the candle to overheat. Keep a minimum distance of 10cm between burning candles.