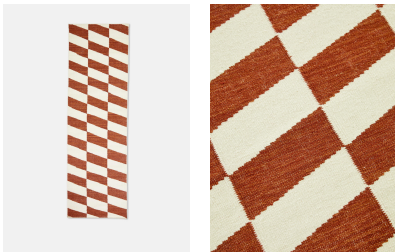


SOHO HOME



Nadine Runner Rust, 75 X 250cm

£350

Regular

£298

Membership

Product details

The soft furnishings of Soho Warehouse form the inspiration for the Nadine runner. Cast in a woven flatweave style, the runner balances depth and airiness with a geometric design in sage and oatmeal tones. Lay it underfoot to fill out expansive floor space.

- Flatweave geometric-style runner
- Tones of oatmeal with sage
- Woven in India
- Inspired by Soho Warehouse

Dimensions

H75 x W250 x D3cm / H2'5" x W8'2" x D1"

Weight

6kg / 13.2lbs

Details

Rug style: Geometric

Technique: Flatweave