



## The Mews Jug

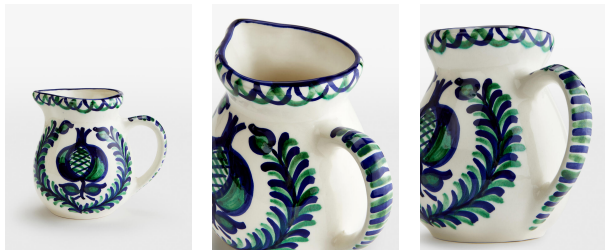
£65 Regular

£55 SOHO HOME+

### Product details

Founded by Annabel Haan, The Mews sources and shares beautiful, naturally produced homeware that brings colour and comfort to your home. This ceramic jug has been selected for its reflection of traditional Andalusian ceramics. A hand-painted, scalloped pattern in tones of blue and green enhances the painterly pomegranate motif in the centre. Pair with other pieces in the collection to bring Mediterranean flair to your table setting.

- Ceramic jug
- Hand-painted in Spain
- Pomegranate motif in the centre
- Andalusian pattern
- Blue and green tones
- Hand wash recommended
- In collaboration with Soho House



### Dimensions

Height :16 cm  
Width :22 cm  
Depth :22 cm  
Weight :1.4 kg

### Details

Size: 16 x 22cm / 6.3 x 8.6"  
Weight: 1.4kg  
Material: Ceramic, Glaze and Paint  
Dishwasher Safe: No  
Microwave Safe: No  
Oven Safe: No