



Antonella Chandelier

£2,340

Regular

£1,872

Membership

Product details

The Antonella pendant is a statement light inspired by the central chandelier that hangs in the bar at Babington House. Made in Italy, the chandelier is pieced together from mouth-blown glass and formed into a tapered silhouette with a swirled design. Display it in large spaces, a room with high ceilings or a stairwell, to bring a touch of glamour to your interiors.

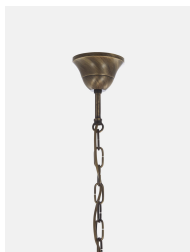
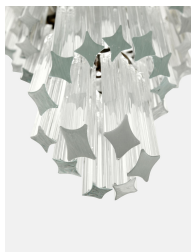
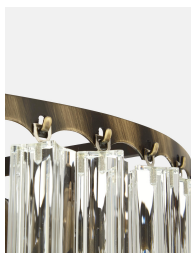
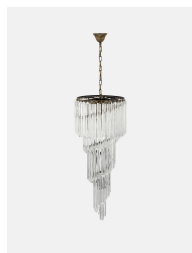
- Chandelier in mouth blown Murano glass
- Tapered silhouette
- Swirled design
- Made in Italy using traditional techniques
- Ideal for larger spaces and high ceilings
- Inspired by the chandelier in the bar at Babington House

Dimensions

Product dimensions: H100 x W40 x D40cm / H39.4 x W15.7 x D15.7"

Product weight: 28kg / 61.7lbs

Number of boxes: 3



Details

Material: Brass and Glass

Cable & Ceiling Rose

Height Adjustable: Yes

Minimum Height: 43.3"

Maximum Height: 66.9"

Ceiling Rose Diameter: 39.3" diameter

Bulb Specification

Bulb(s) Included: No

Bulb required: 1 / E26 / 60 WATTS

Assembly & Technical

Assembly Required: No

Electrician Required: Yes

Voltage: 110-120V

Compliance: UL

IP Rating: IP20

Environment: Dry

Electrical Class: Class 11

Dimmable: Yes. Please consult a qualified electrician regarding compatible bulbs for your dimmer switch system.

Care Instructions: Clean with a soft dry cloth only. Do not use polishing agents, harsh chemicals or abrasive cleaners as they may damage the finish. Always switch off the electricity supply before cleaning.