

## Swanson Rug, 170 X 240cm

£995

Regular

£846

Membership

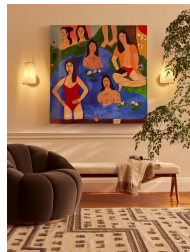
### Sizes

7.8 x 11.8" (Swatch), 5'7" x 7'10", 6'7" x 9'10", 8'10" x 11'10"

### Product details

The contemporary geometric design of our Swanson rug takes inspiration from the prints and upholstery seen at Brighton Beach House. Designed in-house, it has been flat woven in India from pure wool with raised details. Hardwearing and long-lasting, we use flat-woven rugs in most of our Houses, but particularly at Soho Farmhouse where we lay them over chunky sisal for added texture.

- Contemporary geometric rug
- Wool-cotton pile
- Flat woven in India
- Raised textures in details
- Designed in-house
- Contemporary design
- Available in three sizes
- Inspired by the prints and upholstery in Brighton Beach House



### Dimensions

H170 x W240 x D1cm / H5'6" x W7'10" x D0.4"

### Weight

6.3kg / 13.9lbs

### Details

Care instructions: Spot Clean Only

Composition: 78% Wool, 22% Cotton

Handmade: Handmade

Pile: 2

Rug style: Geometric

Technique: Flatweave