

## Swanson Rug, 270 X 360cm

£2,295

Regular

£1,951

Membership

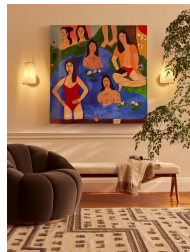
### Sizes

7.8 x 11.8" (Swatch), 5'7" x 7'10", 6'7" x 9'10", 8'10" x 11'10"

### Product details

The contemporary geometric design of our Swanson rug takes inspiration from the prints and upholstery seen at Brighton Beach House. Designed in-house, it has been flat woven in India from pure wool with raised details. Hardwearing and long-lasting, we use flat-woven rugs in most of our Houses, but particularly at Soho Farmhouse where we lay them over chunky sisal for added texture.

- Contemporary geometric rug
- Wool-cotton pile
- Flat woven in India
- Raised textures in details
- Designed in-house
- Contemporary design
- Available in three sizes
- Inspired by the prints and upholstery in Brighton Beach House



### Dimensions

Product dimensions: H270 x W360 x D1cm / H8'10" x W11'9" x D0.4"

Product weight: 13.324kg / 29.4lbs

Packaged or boxed dimensions: H273 x W20 x D20cm / H107.5 x W7.9 x D7.9"

Packaged or boxed weight: 15.474kg / 34.1lbs

## Details

Care instructions: Spot Clean Only

Composition: 78% Wool, 22% Cotton

Handmade: Handmade

Pile: 2

Rug style: Geometric

Technique: Flatweave