



Bayonne Rug, 170 X 240cm

£1,095

Regular

£931

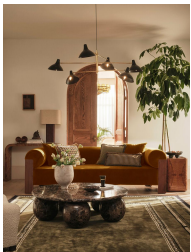
Membership

Sizes

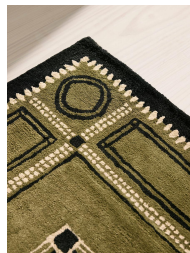
7.8 x 11.8" (Swatch), 5'7" x 7'10", 6'7" x 9'10", 8'10" x 11'10", 9'10" x 13'9"

Product details

The decorative border details of our Bayonne rug is inspired by French rugs from the 1920s Art Deco movement. Hand-tufted in India, this particular design has been crafted using natural fibres. These give a subtle silk-like sheen and reflect the light, adding depth to your interiors, as well as a supreme softness underfoot. Complement the sage colouring with wood furniture pieces in the living room, hallway or dining room.



- Hand-tufted rug
- Decorative cream and black border detail
- Inspired by French rugs from the 1920s
- Designed in-house
- Handcrafted from natural fibres in India
- Subtle sheen finish
- Sage colour
- Available in a range of sizes
- Inspired by Soho House Berlin



Dimensions

Product dimensions: H240 x W170 x D1cm / H7'10" x W5'6" x D0.8"

Product weight: 17kg / 37.5lbs

Packaged or boxed dimensions: H174 x W20 x D20cm / H68.5 x W7.9 x D7.9"

Packaged or boxed weight: 17kg / 37.5lbs

Details

Assembled size: 170 x 240cm

Assembly required: No

Care instructions: Spot Clean Only

Composition: Pile: 100% Viscose Base: 78%

Polyester, 20% Cotton, 2% Viscose Overall: 95%

Viscose, 4% Polyester, 1% Cotton

Construction: Hand Tufted

Pile: Wool