

SOHO HOME



Porter Rug, 200 x 300cm

\$1,295 Regular price

\$1,101 Member price

Natural variations in the wool and jute mean every rug has a unique depth of texture.

Soho Roc House is known for its calming interiors and sea views, and the design of our Porter rug draws inspiration from its neutral decor. Natural, undyed wool and jute yarns are artfully woven together by hand to form its versatile design.

Dimensions

Dimensions: H200 x W300 x D1cm / H6'7" x W9'10" x D0.4"

Weight: 8kg / 17.6lbs

Packaged weight: 8kg / 17.6lbs

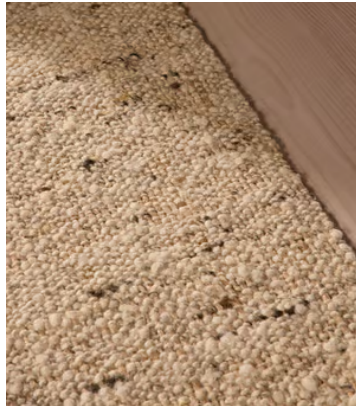
Details

Assembled size: 200 x 300cm

Assembly required: No

Composition: 64% Jute, 36% Wool

Care instructions: Vacuum regularly on a low setting. Blot spills immediately with a soft, dry cloth and spot clean with mild soap if necessary. Do not dry clean. Avoid placing your rug in direct sunlight. Rotate occasionally to ensure even wear, and clip any loose ends with scissors. If the rug gets wet, place it on a flat surface to dry.



Available in 4 sizes

7.8 x 11.8" (Swatch) (H20 x W30 x D1cm / H8" x W1'0" x D0.4")

5'7" x 7'10" (H170 x W240 x D1cm / H5'7" x W7'10" x D0.4")

6'7" x 9'10" (H200 x W300 x D1cm / H6'7" x W9'10" x D0.4")

8'10" x 11'10" (H270 x W360 x D1cm / H8'10" x W11'10" x D0.4")