

SOHO HOME



Constance Rug, 170 X 240cm

£695 Regular

£591 SOHO HOME+

Sizes

170 x 240cm, 200 x 300cm

Product details

You'll find traditional flatweave rugs throughout our Houses, from New York to Mumbai. Skilled artisans in India weave this version from jute and wool, making it durable enough to stand up to life in high traffic areas of the home. The soft palette of sage, blue, mustard and red will suit any interior.

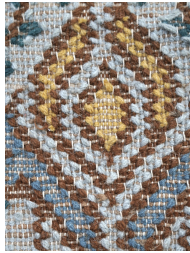
- Jute and wool flatweave rug
- Sage green, blue, mustard and red tones
- Hand woven in India
- Traditional design with a contemporary feel
- Inspired by Soho House New York

Dimensions

Height :170 cm

Width :240 cm

Depth :2 cm



Details

Size: 170 x 240cm / 67" x 94"

Material: 50% Jute, 40% Wool, 10% Cotton

Care Instructions: Vacuum regularly on a low-power setting, using a vacuum cleaner without a beater brush, to prevent debris from settling into roots of the fibres.

Shedding is a natural characteristic of the handmade rugs which reduces over a period of usage. Avoid direct and continuous exposure to sunlight. Use rug protectors under the legs of heavy furniture to avoid flattening piles. Do not pull loose ends. Clip them with scissors to remove. Turn carpet around occasionally to equalise wear. Remove spills immediately; if liquid, blot with clean, un-dyed cloth by pressing firmly around the spill to absorb as much as possible. For hard-to-remove stains, professional rug cleaning is recommended. Store your rug by rolling it front side out and wrapping in cloth for protection. Do not fold or store rug in an airtight plastic bag. Place in dry, well-ventilated area.